

2015 Public Access Assessment: Preliminary Results



Kate Boicourt
NY-NJ Harbor & Estuary Program
10/26/2015



New York - New Jersey
Harbor & Estuary Program
www.harborestuary.org

HUDSON RIVER FOUNDATION
for Science & Environmental Research

Public Access Assessment Objectives



- Understand current access and stewardship capacity; target resources toward need.
- Document progress toward goals.
- Provide public information about access and stewardship.



Questions addressed



- **Where are our public waterfront spaces?**
- **Where is the greatest need for public access?**
- **Where are stewardship activities concentrated?**
- **What are the ways in which particular sites are excelling and how might they be improved?**

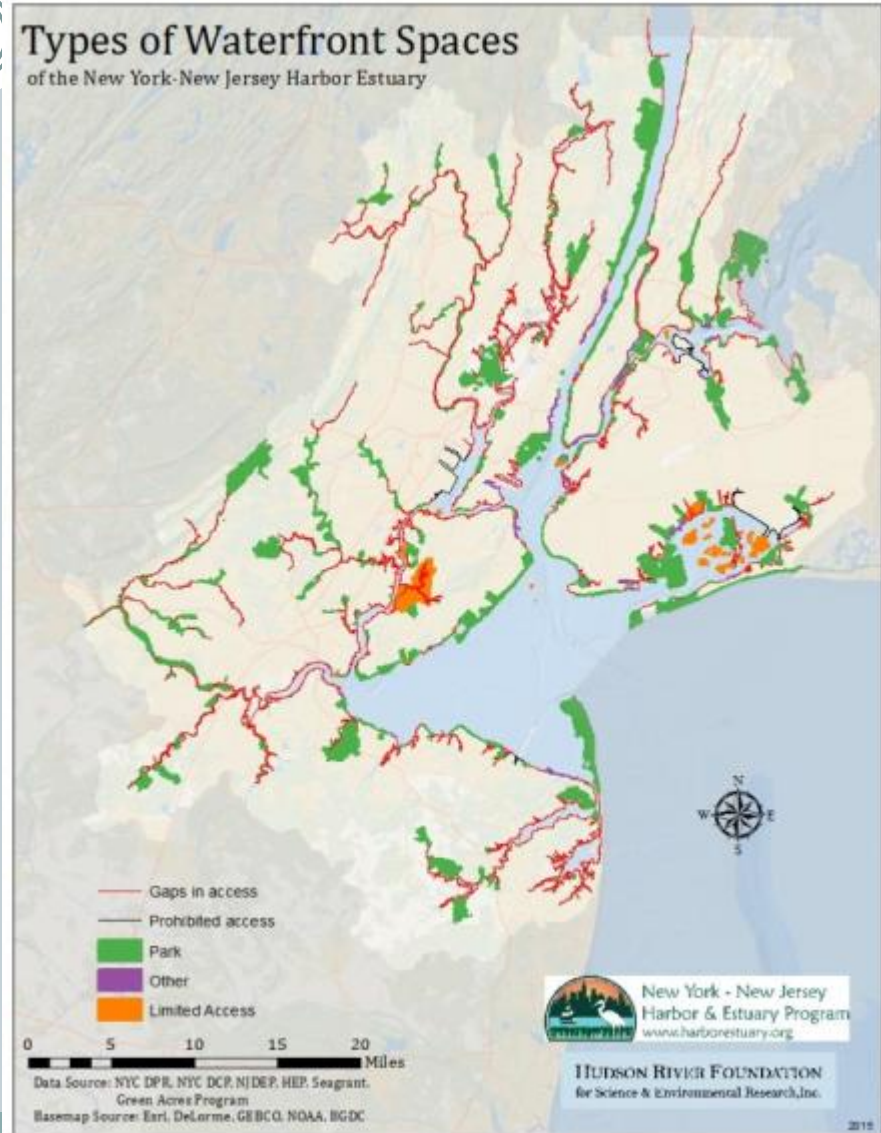


Boyd Park

Where is public access and what does it look like?

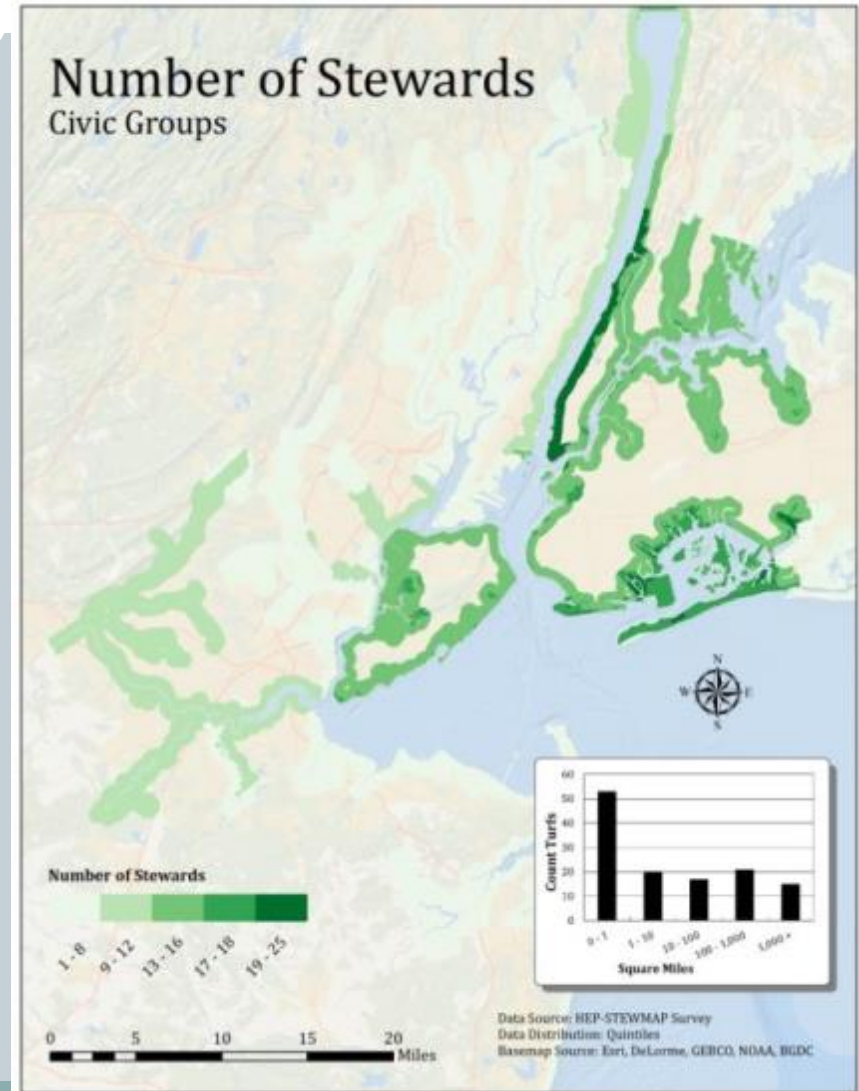
- 6.8 million people live within .5 miles of the coastline
- 41,070 acres of public access
- 63% accessible
- 37% inaccessible (2% homeland security zones)

Types of Waterfront Spaces
of the New York-New Jersey Harbor Estuary



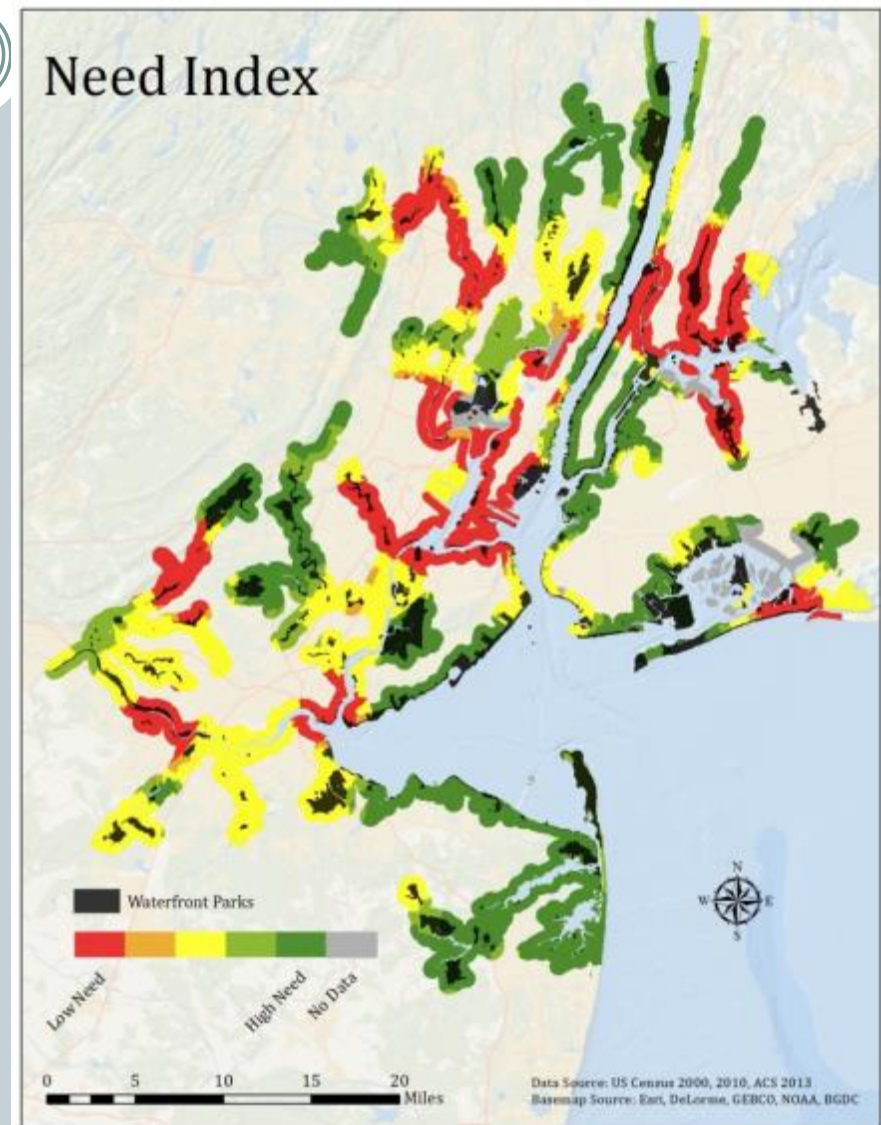
Public Access Assessment: Stewardship Capacity

- 164 groups responded.
- Higher response (or large number of groups in NY)
- Majority of respondents responded with perspectives on site quality.



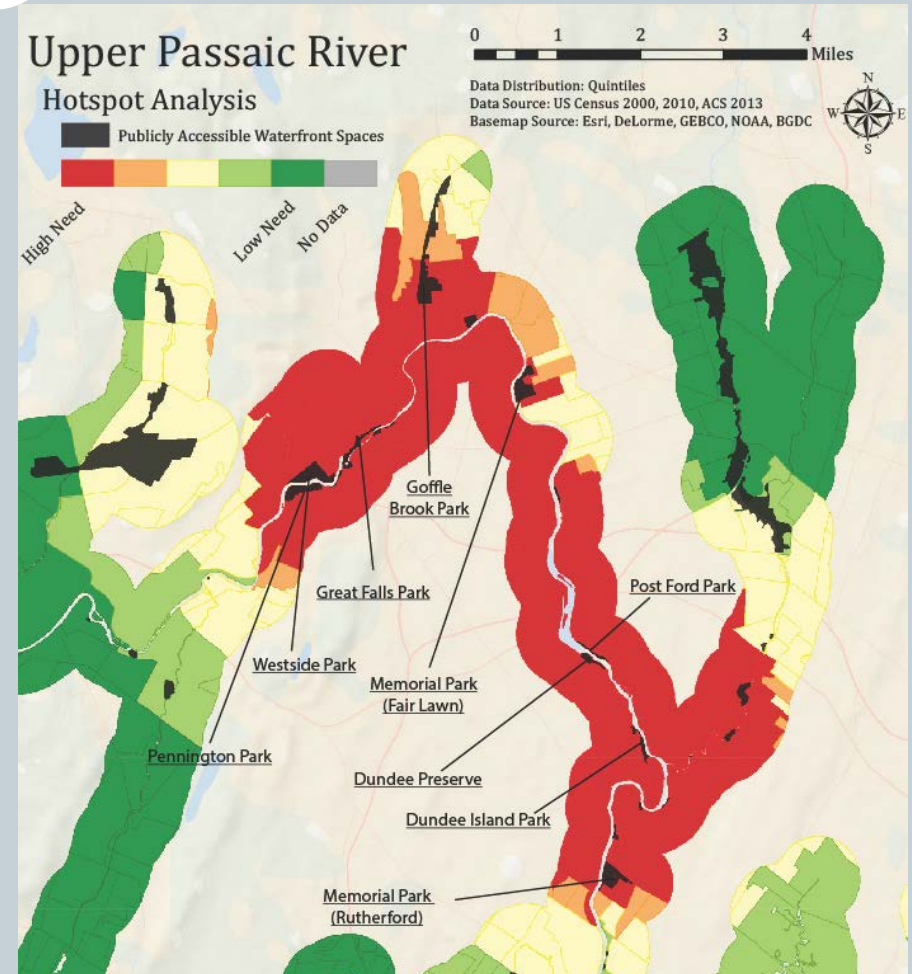
Where is access most needed?

- 12 high need reaches
- 55% persons of color
- 35% youth (under 14)
- 3% population growth
- \$67,766 median household income



Reach analysis

- Existing access and gaps
- Steward perspectives on public access sites within the reach
- Statistics (e.g. population, communities of color, people per acres of waterfront space)



Reach analysis



Reach	Population	Communities of color (%)	Median household income	Youth population (%)	Growth (%)
Harbor-wide	6,784,469	55%	\$67,766	35%	3%
Bronx	838,002	89%	\$37,356	21.8%	3.8%
North Manhattan/Harlem River	340,001	87%	\$39,131	17%	-4.1%
Flushing Bay and Creek	209,838	82%	\$49,716	17%	6.3%
Rockaway East	74,523	82%	\$48,970	24%	8.4%
Upper Passaic	258,458	70%	\$48,620	70%	1%
Lower Passaic/Newark Bay/Bayonne	264,465	69%	\$58,993	65%	1.5%
Lower Hackensack	35,598	68%	\$56,918	66%	3.8%
Elizabeth River/Arthur Kill (NJ)	118,915	77%	\$51,818	68%	3%
Kill Van Kull/Staten Island North Shore	91,927	70%	\$56,415	22%	7.9%
Raritan River Mouth/Upper Raritan Bay	46,727	69%	\$49,783	59%	11.5%
Mid-Raritan	78,595	65%	\$53,698	62%	12.8%
Bound Brook	78,511	74%	\$66,992	67%	4.7%

Reach analysis



Reach	Linear accessibility (% of total)	Density of people to accessible waterfront acres	Acres of public access
Harbor-wide			
Bronx			
North Manhattan/Harlem River			
Flushing Bay and Creek			
Rockaway East			
Upper Passaic			
Lower Passaic/Newark Bay/Bayonne			
Lower Hackensack			
Elizabeth River/Arthur Kill (NJ)			
Kill Van Kull/Staten Island North Shore			
Raritan River Mouth/Upper Raritan Bay			
Mid-Raritan			
Bound Brook			

Coming soon!

Next steps



- Review and refinement
- Final mapping and share draft technical report
- Grants program

